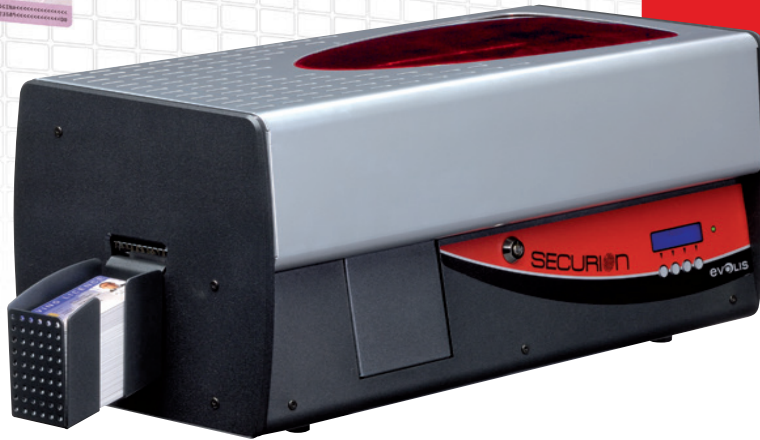


The **Securion** printer is the best solution for personalizing and laminating secure cards at customer-facing counters. It caters to the growing need for security and fraud control and produces cards that will last significantly longer.

Securion comes with a color print module and a laminating station, both operating in dual-sided mode. It takes just one pass to print, encode and laminate a secure card.



THE PRINTER FOR HIGHLY SECURE CARDS

Securion is ideal for delivering secure cards:

- National ID cards
- Driver's licenses
- Secure access control badges
- Health insurance cards

PREMIUM PROTECTION

With its one-of-a-kind lamination station, Securion **durably protects** your secure cards. The printer applies **any type of film** over the entire surface of the card - from simple varnish to patch films with ultra-high security custom holograms - for premium protection of your cards. Your cards will last for **years with virtually no wear and tear**.

PRINTING ON PC CARDS

The **Unichroma™** ribbon used with Securion makes it possible to use direct-to-card printing on **polycarbonate (PC) cards**. These extremely strong cards are used for sophisticated applications requiring a high level of security. The combination of a Securion printer and Unichroma™ ribbons offers an **economical solution** for issuing secure polycarbonate cards.

PROFESSIONAL PRINT QUALITY

Securion comes with a high-performance dual-sided color printing module featuring 300 dpi resolution for **outstanding graphics**. Photos, texts and barcodes are dependably reproduced for **quick visual identification**.

MULTIPLE ENCODING OPTIONS

To meet your specific needs, Securion provides **data encoding options** for magnetic stripe, contact and contactless smart cards. These options can be combined and can be installed on site.

INCREASED PRODUCTIVITY

Securion is designed to issue secure cards **individually or in large runs**. In a **single pass**, your cards are encoded, printed and protected, which **saves you valuable time!**

OPERATING SECURITY

Thanks to the **centralized locking system** that prevents access to consumables (ribbons, films, blank cards, rejected cards), password protection as well as a Kensington® security slot, your Securion card issuing system is **safe and secure**.

EVOLIS OFFERS A WIDE RANGE OF FILMS TO MEET ALL YOUR SECURITY NEEDS.



- Flip-over module for dual-sided card personalization and lamination
- Locking system to secure access to blank cards, ribbons, films and reject tray
- All encoders can be combined



- Blank card storage in a removable feeder with a capacity of 100 cards

- Front control panel with 4 keys, a 2-line LCD display and a status indicator



- Reject tray for collecting defective cards

GENERAL FEATURES

- Color printing module and lamination station
- Single or dual sided printing and lamination
- Edge-to-edge printing
- Color dye sublimation, monochrome thermal transfer
- 300 dpi print head (11.8 dots / mm)
- 16 million colors
- 16 MB of memory (RAM), to save two cards (dual-sided) to memory
- Laminating mode: heat transfer
 - Varnish or patch film
 - Dual-sided lamination
- Speed: 2 mm/s to 18 mm/s (0.08"/s to 0.71"/s)
- Temperature: 100° C to 180° C (212° F to 356° F)

PRINT AND LAMINATION SPEED

- Single-sided YMCK printing, single-sided lamination:
 - 95 - 120 cards/hour
- Dual-sided YMCK-K printing, single-sided lamination:
 - 85 - 105 cards/hour

OPTIONAL FEATURES

- Additional 100-card feeder
- USB encoding over IP through additional USB Net Server module

ADDITIONAL ENCODING MODULES

- Modules available:
 - Magnetic stripe encoder ISO 7811 HiCo/LoCo, JIS2
 - Smart contact station ISO 7816-2
 - Contact smart card encoder - PC/SC, EMV 2000-1
 - Contactless smart card encoder - ISO 14443A, B, ISO 15693, Mifare, DesFire, HID iCLASS
 - Other specific encoders upon request
- Internal USB or IP ports
- Options can be combined
- Factory-installed or installed on site

INTERFACES

- USB (1.0, 1.1, 2.0, 3.0)
- Ethernet TCP-IP 10BaseT, 100BaseT (Traffic Led)

SAFETY

- Locking system to secure access to blank cards, ribbons, films and defective cards
- Kensington® security slot
- Password protected

DISPLAY

- Two-line LCD display and LED status indicators

CARD MANAGEMENT AND SPECIFICATIONS

- Removable feeder capacity: 100 cards (0.76 mm – 30 mil)
- Output hopper capacity: 100 cards (0.76 mm – 30 mil)
- Reject tray capacity: 15 cards (0.76 mm – 30 mil)
- Card thickness: 0.25 to 1 mm (10 to 50 mil), lamination recommended from 0.76 mm (30 mil), not recommended below 0.50 mm (20 mil)
- Card types:
 - PVC cards
 - PVC composite cards
 - Polycarbonate (PC) cards
 - PET-F, PET-G cards
 - ABS cards†
 - Special varnishes†
- Card format: ISO CR-80 - ISO 7810 (53.98 mm x 85.60 mm - 3.375" x 2.125")
- Lamination on standard PVC cards recommended with 0.6 mil patch or varnish

EVOLIS HIGH TRUST® RIBBONS

To maximize the quality and durability of printed cards, the lifespan of the print head and the overall printer reliability, use Evolis High Trust® ribbons.

- Ribbon capacity:
 - 5 panel YMCKO color ribbon: 200 prints/roll
 - 6 panel YMCKO-K color ribbon: 200 prints/roll
 - 1/2 panel YMCKO color ribbon: 400 prints/roll
 - Unichroma™ color ribbon for polycarbonate cards: 200 prints/roll
 - 2 panel KO black monochrome ribbon: 500 prints/roll
 - Monochrome ribbons: 1000 prints/roll* (black, red, green, blue, white, gold and silver)
- Ribbon saver for monochrome printing
- Types of laminating film:
 - Hologram varnish: 400 prints/roll
 - Clear varnish: 400 prints/roll
 - Clear patch, 1.0 mil: 200 prints/roll
 - Clear patch, 0.6 mil: 200 prints/roll
 - Alternate patch front/back, 0.6 mil and 1.0 mil: 200 prints/roll
 - Patches and varnishes on request: holograms, security inks, specific cuts
- Easy-to-load cassette for laminate films

SOFTWARE

- Compatible with Windows™ XP SP3 32/64, Vista 32/64, W7 32/64, W8 32/64
- Mac and Linux OS upon request

CERTIFICATIONS AND STATEMENT OF COMPLIANCE

- RoHS
- CE, FCC, IEC, VCCI, CCC, KC

POWER SUPPLY

- Power supply: 100-240 Volts AC, 50-60 Hz, 2 A
- Printer: 24 Volts DC, 6.25 A

OPERATING ENVIRONMENT

- Min/max operating temperature: 15° / 30° C (59° / 86° F)
- Humidity: 20% to 65% non-condensing
- Min/max storage temperature: -5° / +70° C (23° / 158° F)
- Storage humidity: 20% to 70% non-condensing
- Operating ventilation: open air

SOUND (EVALUATED ACCORDING TO THE ISO 7779 STANDARD)

- Sound pressure in assistant positions LpAm (color mode YMCKO)
 - When operating: 48 dB (A)
 - In standby mode: 32 dB (A)

PACKAGING CONTENT

- Printer
- CD-ROM with printer driver and user manuals
- Cleaning kit
- USB Cable
- Output hopper
- Power supply and cord
- Laminate film loading cassette
- 3 empty cores for laminate films

SIZE AND WEIGHT

- Dimensions (H x W x L):
 - Without the output tray: 274.64 x 262.16 x 562.70 mm (10.81" x 22.15" x 10.32")
 - With the output tray: 274.64 x 262.16 x 658.20 mm (10.81" x 25.91" x 10.32")
- Weight: 15.4 kg (33.15 Lbs)

WARRANTY

- 2 years (printer, lamination station, print head and lamination hot roller)*, limited to 100,000 passes
- Warranty extension available as an option

1 Under specific conditions

2 Warranty subject to observance of specific conditions and use of Evolis High Trust® ribbons

EUROPE - MIDDLE-EAST - AFRICA

Evolis Card Printer - 14 avenue de la Fontaine - ZI Angers-Beaucouzé
49070 Beaucouzé - France
T +33 (0) 241 367 606 - F +33 (0) 241 367 612 - info@evolis.com

AMERICAS - Evolis Inc. - Fort Lauderdale - evolisinco@evolis.com

ASIA-PACIFIC - Evolis Asia Pte Ltd - Singapore - evolisasia@evolis.com

INDIA - Evolis India - Mumbai - evolisindia@evolis.com

CHINA - Evolis China - Shanghai - evolischina@evolis.com

www.evolis.com





multisystems

Η multisystems διανέμει και υποστηρίζει τεχνικά, προϊόντα από τους μεγαλύτερους οίκους κατασκευής σε Barcode scanners, εκτυπωτές ετικετών, φορητά τερματικά, λύσεις πλαστικών καρτών τύπου πιστωτικής καθώς και συστήματα λιανικής πώλησης όπως συστήματα Point of sale, ταμειακές μηχανές και φορολογικούς μηχανισμούς.

Στις εγκαταστάσεις μας στο Αιγάλεω λειτουργεί πλήρως εξοπλισμένο τεχνικό εργαστήριο με άρτια καταρτισμένους μηχανικούς που μπορούν να δώσουν λύσεις ακόμα και στις πιο δύσκολες μηχανογραφικές προκλήσεις του χώρου της βιομηχανίας, της εφοδιαστικής αλυσίδας και της λιανικής.

Σας εξυπηρετούμε έναν – έναν προσωπικά προσφέροντας σας τον προσωπικό σας τεχνικό σύμβουλο ο οποίος γνωρίζει τις ανάγκες και τις ιδιαιτερότητες της επιχείρησής σας ενώ σας εξυπηρετεί σε όλη την πορεία της συνεργασίας σας μαζί μας ή εξέλιξης του έργου σας. Είμαστε δίπλα σας να σας συμβουλέψουμε να επιλέξετε τον σωστό εξοπλισμό μέσα από μια ευρύτατη γκάμα 12.000 προϊόντων τεχνολογίας για όλες τις ανάγκες από τα πιο επώνυμα εργοστάσια της παγκόσμιας αγοράς.

Για την καλύτερη εξυπηρέτησή σας έχουμε διαχωρίσει τα εμπορικά και τα τεχνικά μας τμήματα σε 6 διακριτές ενότητες τις οποίες μπορείτε να δείτε στον πίνακα που ακολουθεί προκειμένου να σας εξυπηρετούμε γρήγορα και αποτελεσματικά. Για οτιδήποτε χρειαστείτε μην διστάσετε να επικοινωνήσετε μαζί μας στο **211 780 1000**, θα χαρούμε να σας εξυπηρετήσουμε.

Η multisystems διαθέτει και υποστηρίζει



Barcode scanners

Ενσύρματα | Ασύρματα | 2D Imagers | Bluetooth IOS / Android | Λιανικής



Εκτυπωτές ετικετών & αναλώσιμα

Επιτραπέζιοι | Βιομηχανικοί | Έγχρωμοι | Ετικέτες | Μελανοταινίες



Φορητά τερματικά

Φορητά τερματικά | Βιομηχανικά Tablets | Τερματικά αυτοκινήτου / Κλαρκ



Συστήματα λιανικής πώλησης Point of sale

Συστήματα POS | Touchscreen οθόνες | Θερμικοί εκτυπωτές



Λύσεις πλαστικών καρτών

Εκτυπωτές πλαστικών καρτών | Αναλώσιμα | Πλαστικές κάρτες PVC



Φορολογικά προϊόντα

Ταμειακές μηχανές | Φορολογικοί μηχανισμοί | Φορολογικοί εκτυπωτές

Συνεργαζόμενοι οίκοι

DATALOGIC

ZEBRA

hp Gold Partner

Honeywell

PERFORMANCE PARTNER PROGRAM SILVER LEVEL

EPSON AUTHORISED PARTNER 2015

Intermec

do

datamax • o'neil

elo TOUCH SOLUTIONS

socket mobile

evolis card printers

AVATO

CITIZEN Micro HumanTech



multisystems

ACR Electronics ΕΠΕ

Λεωφ. Θηβών 339, 122 43, Αιγάλεω

<http://www.multisystems.gr> | info@multisystems.gr

Tel. 211 780 1000 Fax 211 780 2000